

# Welcome to ECE!

## Academic Orientation 2022





The Edward S. Rogers Sr. Department  
of Electrical & Computer Engineering  
UNIVERSITY OF TORONTO

We wish to acknowledge this land on which the University of Toronto operates. For thousands of years it has been the traditional land of the Huron-Wendat, the Seneca, and most recently, the Mississaugas of the Credit. Today, this meeting place is still the home to many Indigenous people from across Turtle Island and we are grateful to have the opportunity to work on this land.



- We understand access to be a shared responsibility between everyone in this space.
- We will strive to create an accessible space that reduces the need for you to disclose a disability or impairment for the purposes of gaining an accommodation. In doing this together, we strive to welcome disability, and the changes it brings, into our space.

- Is there anything about the space that we should address now?
- Are there any other access needs that might affect your participation in the orientation that we could also address?

*Please reach out to Jess MacInnis*



The Edward S. Rogers Sr. Department  
of Electrical & Computer Engineering  
UNIVERSITY OF TORONTO

# Welcome from the ECE Chair and ECE Undergraduate Office



Deepa Kundur  
Professor & Chair

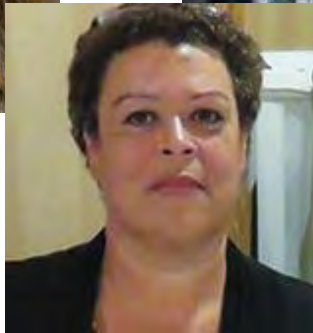
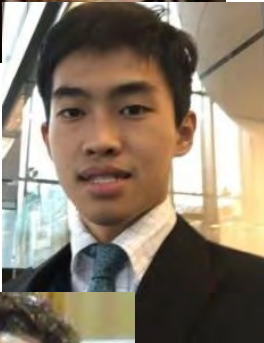
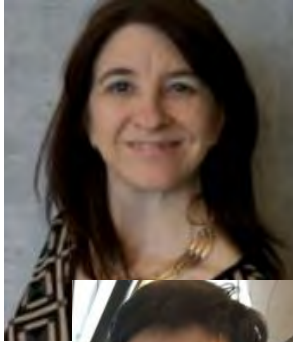


- Professor **Deepa Kundur**
- **ECE Chair**
  - Professor who leads and manages the Department and reports to the Dean
- **Triple Alumna**
  - B.A.Sc., 9T3 (EE)
  - M.A.Sc., 9T5 (ECE)
  - Ph.D., 9T9 (ECE)





# The Strength of ECE is in Our People





# The Strength of ECE is in Our People









# What is Special about ECE at U of T?



# Common Tips to Help You Succeed

- Read your UTORmail messages!
  - Make backups of your computer!
  - Manage your time!
  - Work with people, but don't copy!
  - Focus on learning, don't obsess about marks!
  - Ask for help!
  - Have a balanced life!
-

# Prof. Deepa's DOs and DON'Ts

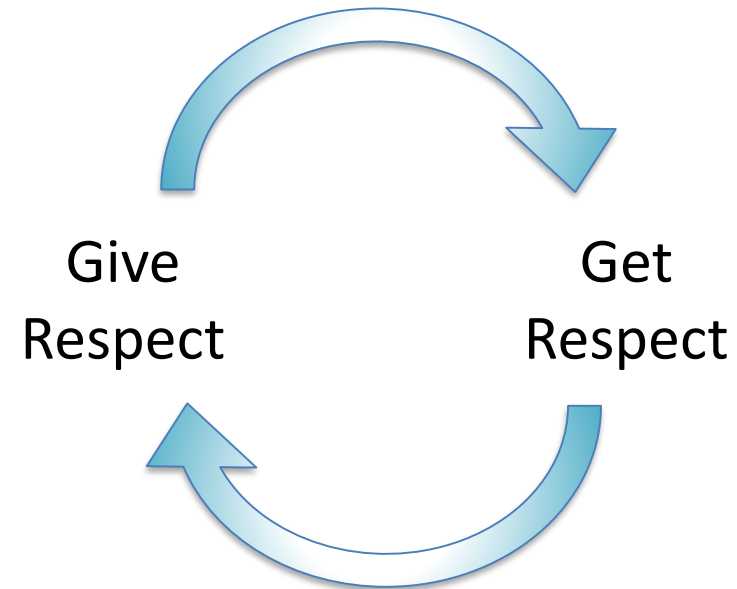
---



# DOs

## Treat people with respect

- Refer to your professors as “**Professor** [LastName]”
- Be polite to staff members
- Respect people’s time, space and values
- Respect **yourself**



# DOs

## Focus on Competence NOT Confidence

- Competence can **protect** you from getting voted off the island, but confidence will not.



# DOs

## Value Your Mistakes

One of the best things ever said:

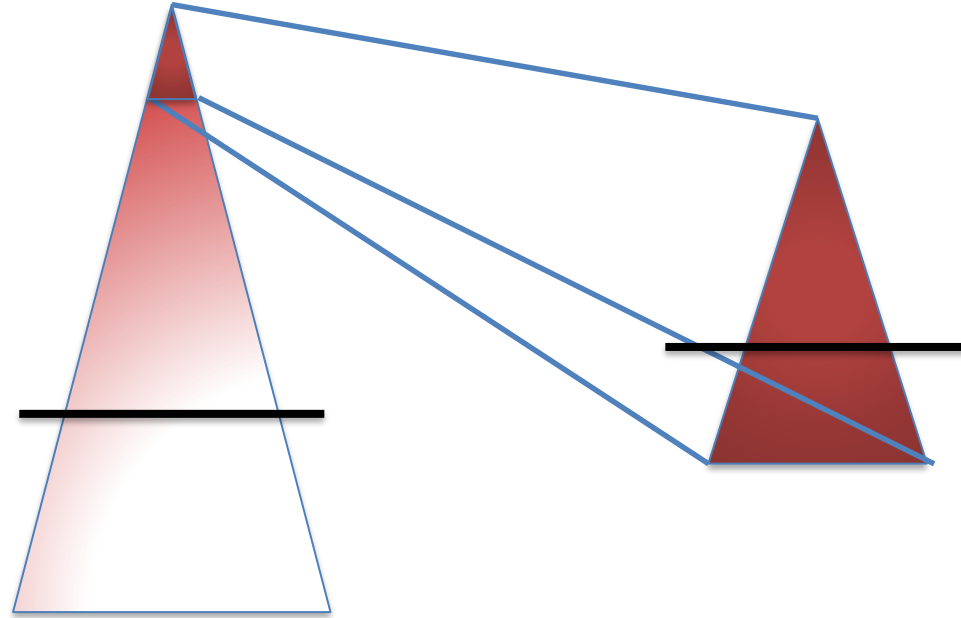
“Good judgement comes from experience  
and experience comes from bad judgement.”

- Learning happens through failure
  - Overcoming obstacles leads to resilience
  - Take risks
-



DOs

Manage Your Time



# DON'Ts

## Don't Take Things Personally

- What happens academically or professionally is often not personal
  - Taking this personally leads to “drama” and stress
  - Understand that what someone does is because of **them**, not **you**
-

# DON'Ts

## Don't Give Up

- Don't give up on yourself; if you give up, you will surely fail!
- Pick yourself up and try to see things differently
- Quick starts vs. Late bloomers – both good



**“It ain’t over till it’s over.”**

**-- Yogi Berra**



# DON'Ts

## Don't Worry about Conflict



- Conflict is **natural**; conflict is healthy
  - Avoid dysfunctional conflict/situations/people
  - Choose your battles
  - “politics”/”backstabbing” occurs when at least one party is **fearful**
-

# DON'Ts

## Don't be Fearful

- 6 **cancers**  
(by Stephen R. Covey):
  - Cynicism
  - Criticism
  - Comparing
  - Competing
  - Complaining
  - Contending
- How do I overcome fear? **COMMUNITY**



“Fear is the path to the dark side. Fear leads to anger. Anger leads to hate. Hate leads to suffering.”

-- Yoda, Star Wars

# Are you passionate about ECE, Engineering and U of T?

## BECOME AN ECE AMBASSADOR!

- Share your enthusiasm with prospective students
- Gain professional experience and training
- Meet ECE professors, Chair and upper year students

Apply: [uoft.me/ece-ambassadors](https://uoft.me/ece-ambassadors)



The Edward S. Rogers Sr. Department  
of Electrical & Computer Engineering  
UNIVERSITY OF TORONTO







The Edward S. Rogers Sr. Department  
of Electrical & Computer Engineering  
**UNIVERSITY OF TORONTO**

# ECE Undergraduate Office



Professor Ravi Adve  
Associate Chair  
Undergraduate Studies



Leanne Dawkins  
Undergraduate Program  
Manager and Advisor



Albert Hsueh  
Undergraduate Program &  
Payroll Officer



Karen Irving  
Student Advisor



Neena Peterson  
Student & Information  
Service Assistant



Meera Puvitharan  
Student Services Assistant



# Become the engineering leader the future needs and build a better world.

Visit [uoft.me/ileadstudents](https://uoft.me/ileadstudents) to sign up to our mailing list.







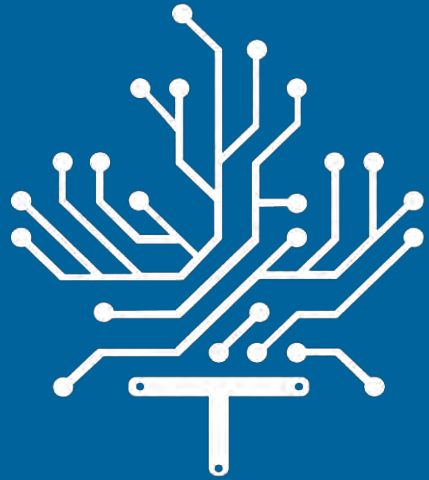
## Join ILead courses, workshops and programs to learn about:

Leadership styles / Relationship building / Networking / Team building and global teams / Goal setting / Motivation / Persuasive communication / Personal values / Influence / Self-knowledge / Organizational culture / Organizational development / Difficult conversations / Strengths identification / Life path clarification / Professionalism / Equity / Coaching for Club Leaders



Visit [uoft.me/ileadstudents](https://uoft.me/ileadstudents)





# IEEE

University of Toronto  
Student Branch

First Year Orientation



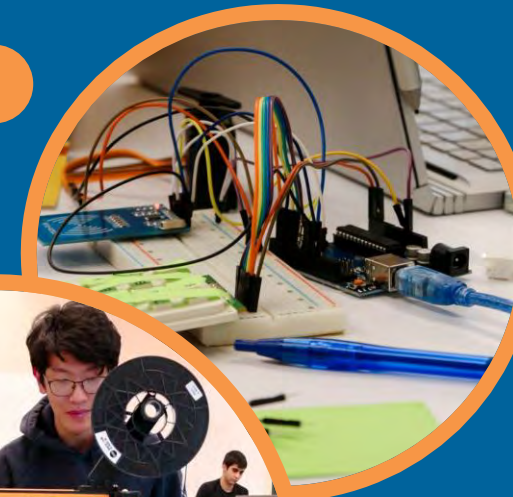
# What is IEEE?



UNIVERSITY OF  
**TORONTO**  
IEEE STUDENT BRANCH

# Our Events

MakeUofT



NewHacks

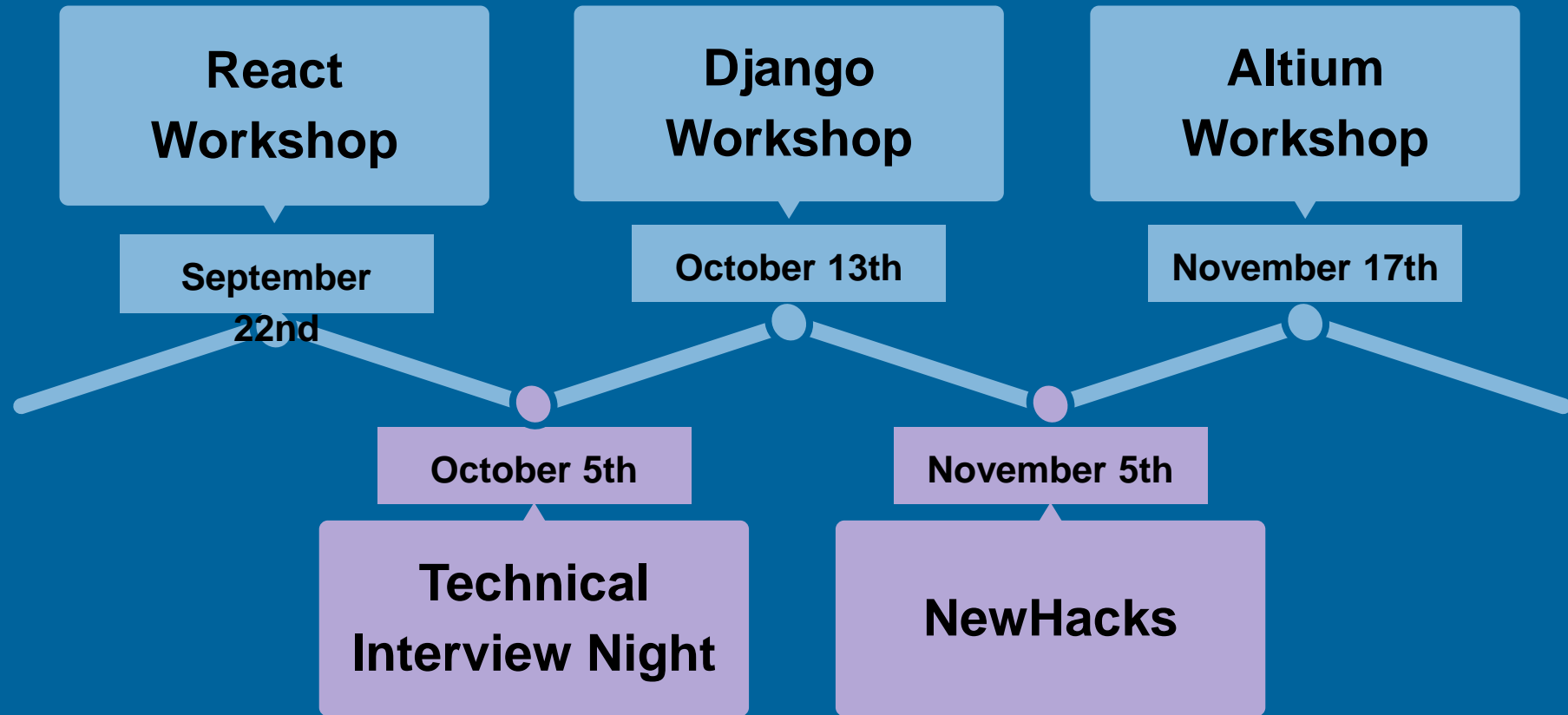
# Our Events

## Workshops



## Technical Interview Night

# Calendar



# Connect With Us

**See more on our  
website!**



**Recruiting  
First Year Associates!**

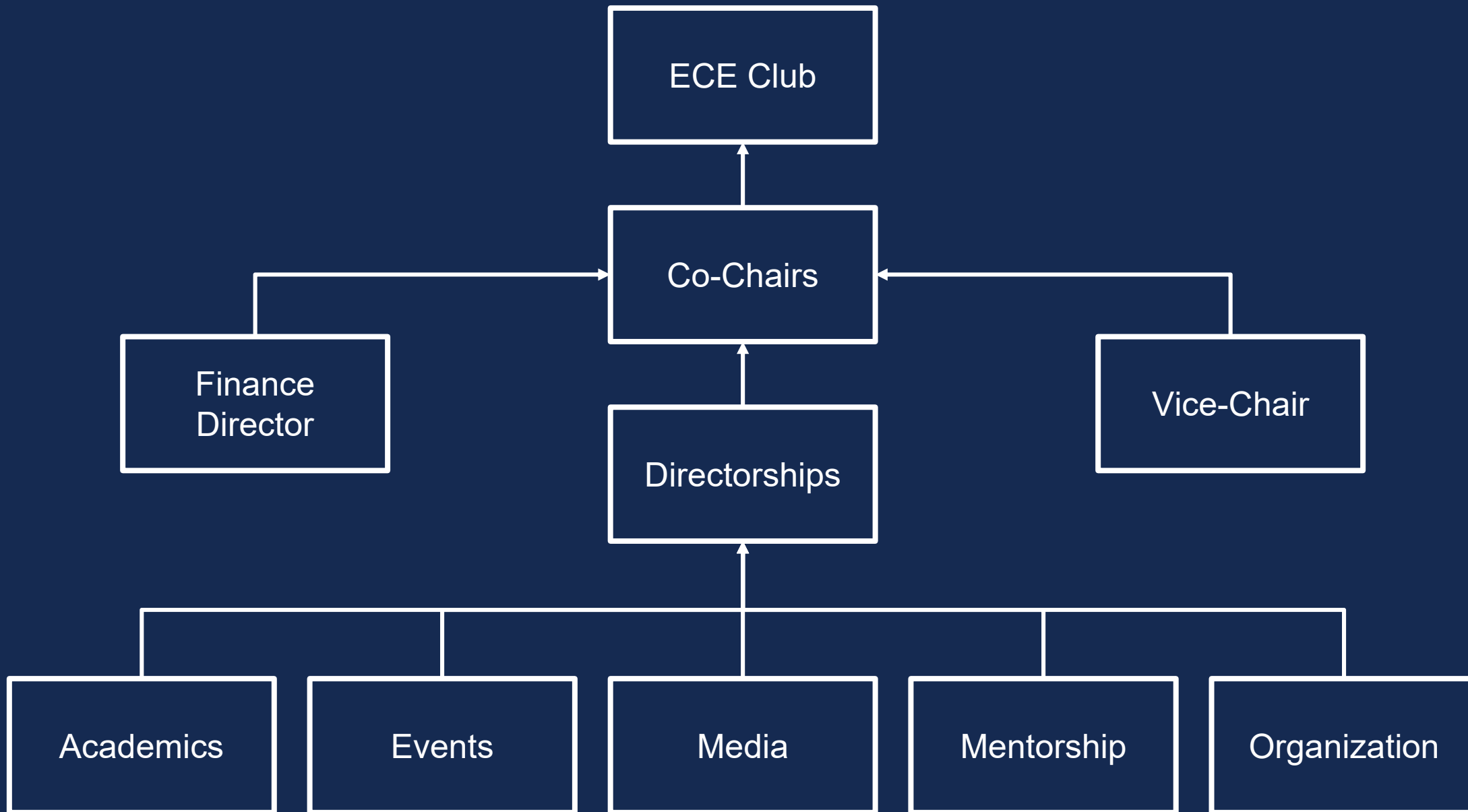




# About Me

Sam Chowdhury

- Third-year Class Representative
  - Solo Second-year Class Rep for 400 students last year
- Finance Director
- Interim Co-Chair



# Mentorship

- A program to help you transition into university during your first year
- A mentor to ask questions and receive advice throughout the year
- Mentors are hand-picked to match with mentees
- Mentoring events to connect with your mentor throughout the year
- Sign up link at the end of this presentation!

# Academics

- Academic Advocacy
  - Class Representative elections take place in late September!
- Course feedback and Anticalendar on <https://courses.skule.ca>

## ECE110H1 - Electrical Fundamentals

ECE110 is the first course that introduces you to the electrical side of ECE. It's split into two halves: the first covers electromagnetic fields, and the second covers electrical circuits. Because of the breadth of the material covered and the wide range of challenging questions they can ask, it's generally considered one of more challenging courses in first year.

### Important Skills

*Problem Solving, Memorization, Theoretical Knowledge.*

### Tips

- Go to lectures! The lecturers are generally good, and if you can't learn from yours effectively there are always other sections you can go to. Understanding the theory is key in this course.
- The online homework (called WileyPlus) will be annoying as they'll be lots and they'll be frequent, however do try to complete them all and understand how to the questions.
- Despite the difficulty of this course, the easier labs will almost guarantee you pass the course.

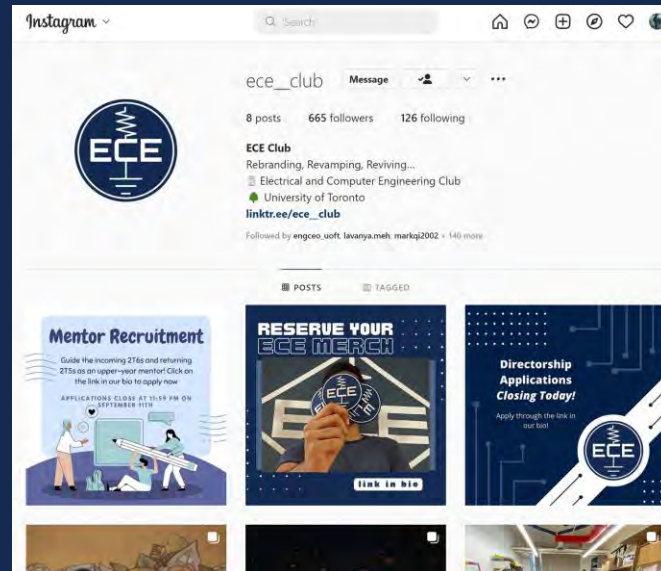
[View Exams](#)





# Events, Media and Organization

- Running destressing, networking and celebratory events
- Keeping you up to date and informed with relevant news and info
- Managing our facilities and resources



# Follow us!

ECE Club links and social platforms:

[https://linktr.ee/ece\\_\\_club/](https://linktr.ee/ece__club/)

My links and social platforms:

<https://samn.ca>

See you around Skule :)





# WELCOME TO PEY CO-OP

Haven't registered yet? Don't fret!

<https://engineeringcareers.utoronto.ca/explorepeyco-op>

Come explore the world of work with us!

# A Sneak Peak

## Sample Opportunities By Discipline

Below are just a few of the **industries** and **employers** who hired students in each engineering discipline in 2021-2022, along with the **average PEY Co-op salary** for that discipline.



**Note:** You are not limited to opportunities that are only listed in the discipline you are in. Many students step into atypical work environments out of curiosity or personal fit.

Chemical Engineering	+
Civil Engineering	+
Electrical and Computer Engineering	+
Engineering Science	+
Industrial Engineering	+



A cosmic-themed background featuring a dark blue night sky with various celestial bodies. In the upper left, there's a large, cratered planet. To its right, a bright yellow sun or star is partially visible. The lower portion of the image shows a stylized, wavy horizon line in shades of blue and white, suggesting a landscape or water surface.

# WELCOME TO PEY CO-OP

Questions?  
[sd.ecc@utoronto.ca](mailto:sd.ecc@utoronto.ca)





The Edward S. Rogers Sr. Department  
of Electrical & Computer Engineering  
**UNIVERSITY OF TORONTO**

# Meet Your Professors



Professor Margaret Chapman



Professor Xilin Liu



Professor Mark Jeffrey



Professor Shurui Zhou



Professor Jon Eyolfson