



# CHOOSING COURSES AND YOUR CAREER

---

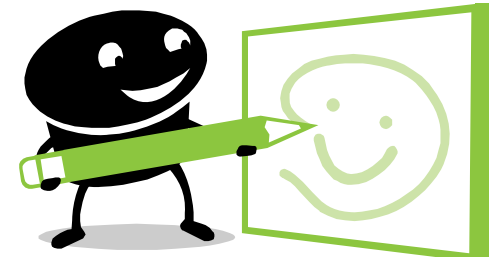
Tuesday, November 8, 2011

# Today's Topics

- A bit about me
- My courses in 3<sup>rd</sup> and 4<sup>th</sup> year
- How do you decide?
- Creating my career path
- Tips and advice
- Q & A

# My Short Autobiography

- Currently working as a Junior Project Manager at RBC Capital Markets in Operations Technology
- Graduated in June of this year as a Computer Engineer
- Worked at IBM for PEY as a Release Engineer & Project Management Intern
- Completed 2 summer internships at TD Securities working as a Risk Analyst



# Magellan for me

Session	Selection				
<u>2008F</u>	CHE353H1 F Engineering Biology	ECE302H1 F Probability & Random Pro	ECE334H1 F Digital Electronics	ECE345H1 F Algorithms & Data Struct	ARC131H1 Introduction to Architec
<u>2009S</u>	ECE311H1 S Dynamic Systems & Contro	ECE316H1 S Communication Systems	ECE342H1 S Computer Hardware	ECE361H1 S Computer Networks I	ARC132H1 Contemporary Architectur
<u>2010F</u>	ECE410H1 F Control Systems	ECE452H1 F Computer Architecture	ECE461H1 F Internetworking	ECE496Y1 Y Design Project	CLA160H1 F Introduction to Classica
<u>2011S</u>	ECE411H1 S Real-Time Computer Contr	ECE472H1 S Engin. Econ. Analysis &	ECE496Y1 Y Design Project	CLA201H1 Latin & Greek in Scienti	FSL100H1 S French for Beginners

ECE Program Requirements:

Kernels	Area 3: ECE334H1 F Area 6: ECE345H1 F
Depths	Area 4: ECE311H1 S, ECE410H1 F, ECE411H1 S Area 5: ECE342H1 S, ECE452H1 F, ECE361H1 S
Engineering Economics	ECE472H1 S
Capstone	ECE496Y1 Y
Science/Math	CHE353H1 F
Technical Electives	ECE302H1 F, ECE316H1 S, ECE461H1 F
Free Elective	FSL100H1 S
Complementary Studies	CS3F: ARC131H1 CS3S: ARC132H1 CS4F: CLA160H1 F CS4S: CLA201H1

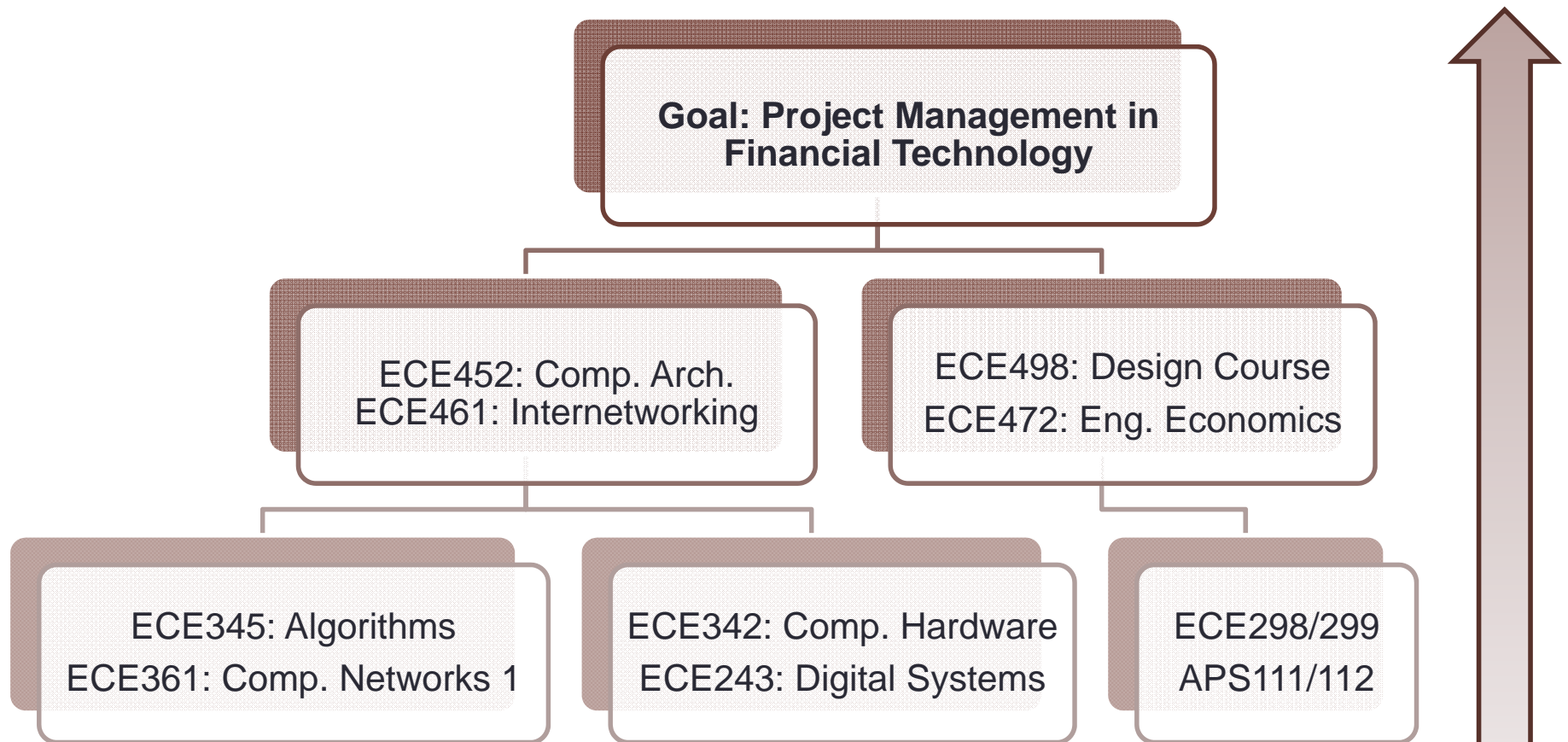
You have fulfilled the ECE program requirements.

# Decisions and more decisions

- It can be difficult and frustrating to choose courses.
  - Will I enjoy my courses?
  - Will this help or hinder my GPA?
  - What courses relate to my potential career interests?
  - Will my future courses be in accordance with the rapidly developing industry?
  - Who should I ask???



# Career Path and Courses



# Tips and Advice

- Do not get stressed.
- Ask for help
  - Start with your peers currently in 3<sup>rd</sup> and 4<sup>th</sup> year
  - Professors are friendly (mostly)
  - Network with industry professionals
  - Mentorship programs
- ESIP and PEY
- LOT events
- Network with RECENT ALUMNI!
- GET INVOLVED!



# Q & A

---